

# SIGNATURE

## NORTH EAST

OFFICIALLY RATED THE NO.1 ESTATE AGENT IN THE NORTH EAST







📍 Union Quay, North Shields NE30 1HB



# Union Quay, North Shields NE30 1HB

**Asking Price**  
**£295,000**

Signature North East welcomes you to this exceptional two-bedroom apartment, situated within the iconic Grade II Listed Irvin Building in the heart of North Shields. Measuring approximately 93m<sup>2</sup>, this is one of the largest apartments within the building, offering both space and character. With the vibrant North Shields Fish Quay quite literally on your doorstep, you're perfectly placed to enjoy an excellent selection of pubs, shops, eateries, and nearby Laurel Park — all just a short walk away.

Upon entry, you're greeted by a welcoming hallway which leads into the expansive open-plan living, kitchen, and dining space. This stylish and versatile room has recently been updated with new flooring and offers ample space for a lounge area, dining setup, and fully fitted kitchen. The kitchen itself is newly installed, featuring bright and attractive wall and base units, stone countertops, and a convenient breakfast bar with stools. It also boasts multiple integrated appliances including an induction hob and integrated extractor. The living area is bright and airy, enhanced by a large window that floods the space with natural light and provides a relaxing spot for furnishings.

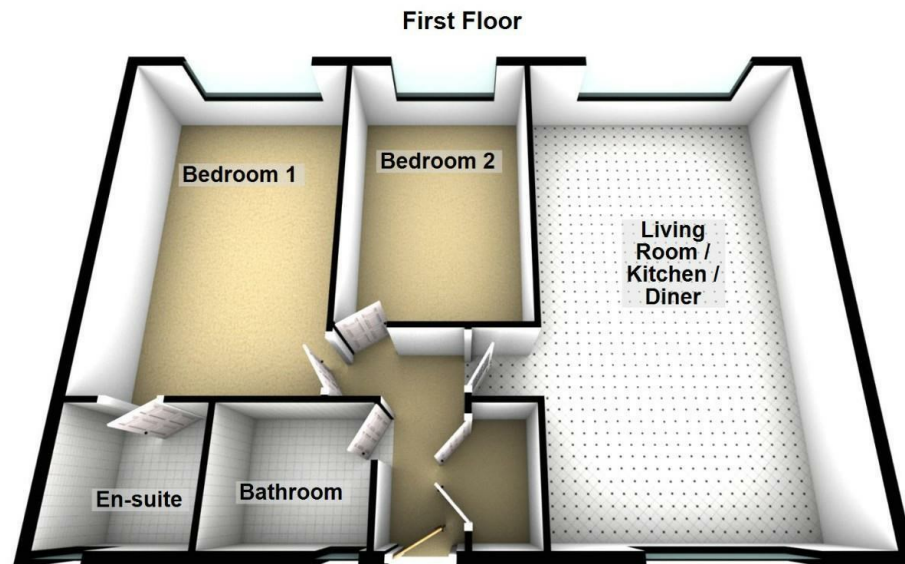
As you continue through the apartment, you'll find two generously sized bedrooms, both of which comfortably accommodate a double bed along with additional furnishings. The principal bedroom is further enhanced by the addition of an en-suite bathroom, offering added privacy and convenience. Completing the apartment is a well-appointed and elegant family bathroom, fitted with a bathtub, hand basin, and WC.

The Irvin Building benefits from secure gated access and disabled access via a convenient lift service to all floors. Externally, residents can enjoy a beautifully maintained communal roof terrace with impressive views over the Mouth of the Tyne. Parking is also available via a covered car port, making this a truly desirable and well-appointed home in a sought-after riverside location.



PLEASE NOTE THAT THE VENDOR HAS CERTIFIED THE PROPERTY INFORMATION AND IMAGES.

# PROPERTY FLOORPLAN



## Measurements:

Living Room / Kitchen / Diner  
26'4" x 15'3"


Bedroom One  
19'5" x 12'2"

En-suite  
6'6" x 6'11"

Bedroom Two  
15'8" x 10'0"

Bathroom  
6'7" x 7'6"

## Energy Efficiency Rating

	Current	Potential
Very energy efficient - lower running costs		
(92 plus) <b>A</b>		
(81-91) <b>B</b>		
(69-80) <b>C</b>	<b>73</b>	<b>74</b>
(55-68) <b>D</b>		
(39-54) <b>E</b>		
(21-38) <b>F</b>		
(1-20) <b>G</b>		
Not energy efficient - higher running costs		
<b>England &amp; Wales</b> EU Directive 2002/91/EC 		









More 5 Star Customer Reviews than any other Agent based in the North East on [allAgents.co.uk](https://allAgents.co.uk)



**SALES**

**LETTINGS**

**FINANCE**

**LAW**

**WE COVER THE WHOLE OF THE NORTH EAST**

Whitley Bay  
0191 251 3344

Cramlington  
01670 897 213

Tynemouth  
0191 296 6689

Morpeth  
01670 513 966

Ponteland  
01661 820 082

Wallsend  
0191 432 4151

Alnwick  
01665 511 800

Heaton  
0191 432 4275

Forest Hall  
0191 266 9966

Other locations  
0191 640 3523

Newcastle  
0191 640 2284

Durham  
0191 303 8252

Gosforth  
0191 640 3523

Sunderland  
0191 543 6390

Whickham  
0191 432 5102

Gateshead  
0191 432 4294

Jesmond  
0191 281 1037

Killingworth  
0191 640 3602

Ryton  
0191 413 9845

Head Office &  
Lettings  
0191 253 4815

\*Highest recommended 5-star reviews than any other Estate Agent based in the North East on [allAgents.co.uk](https://allAgents.co.uk) - The UK's Largest Customer Review Website for the Property Industry & Awarded Best Estate Agency 2018 & 2019 - North East England by SME News